



THE ASHTON



3 bedrooms



1 bathroom/
en-suite



2 parking spaces

Living/dining area with French doors to rear

Separate kitchen

Front aspect master bedroom

Two further bedrooms

Allocated parking for two cars

Abbey Park



LARKFLEET
HOMES

THE ASHTON



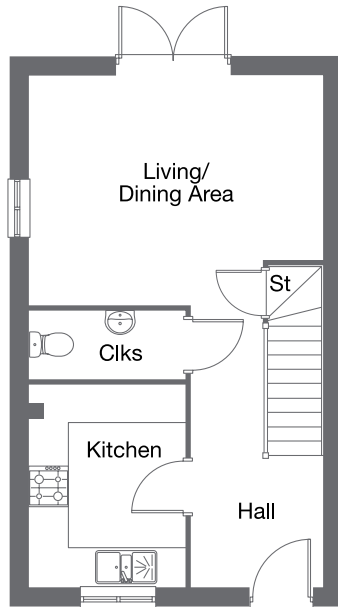
3 bedrooms



1 bathroom/
en-suite



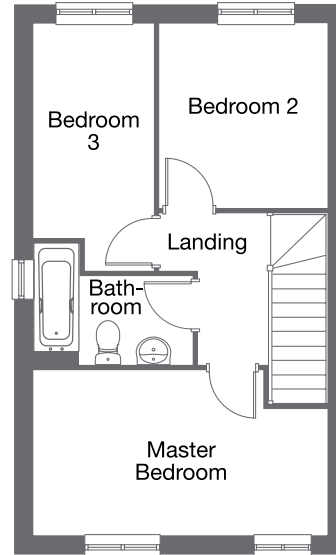
2 parking spaces



Ground Floor

Living/Dining Area
4.58m x 3.58m 15'0" x 11'8"

Kitchen
3.15m x 2.43m 10'4" x 8'0"



First Floor

Master Bedroom
4.57m x 2.57m 15'0" x 8'5"

Bedroom 2
2.87m x 2.62m 9'5" x 8'7"

Bedroom 3
3.34m x 1.86m 10'11" x 6'1"

Bathroom
2.47m x 1.38m 8'1" x 4'6"

**CONSUMER
CODE FOR
HOME BUILDERS**

www.consumercode.co.uk



Please note: All measurements shown are approximate maximum room dimensions and are + or - 50mm. They are not intended to be used for carpet sizes, appliance sizes or items of furniture. Floorplans depict a typical layout of this type. Please refer to the development brochure for confirmation of the plot numbers for this particular house type. Depending on plot number, the floor plans for this house type may be opposite to those shown above. All house type images are for illustrative purposes only and the final building detailing and finishes may vary slightly from what is shown. For exact plot specification, details of external and internal finishes, dimensions and floorplans, please speak with our Sales Advisor. Landscaping shown is for illustration purposes only. Please speak to our Sales Advisors for full site-specific details. Every care has been taken to ensure the accuracy of these particulars, but the contents shall not form part of any contract and the vendors reserve the right to alter the specification and/or design without notice.

2328 (801 sq ft)

Abbey Park



LARKFLEET
HOMES